



The CLUE

Continuing Library User Education

The Shimberg Health Sciences Library & Media Center

Volume 10 Issue 3
Beverly A. Shattuck, MS, MBA, Director

Spring/Summer 2006
<http://www.health.usf.edu/library>



LIBRARY HOURS

Mon.-Fri. 7:30 am - 11:00 pm
Saturday 10:00 am - 11:00 pm
Sunday noon - 11:00 pm

TELEPHONE NUMBERS

Information 974-2243
Circulation 974-2243
Course Registration 974-2990
Education 974-2990
Interlibrary Loan 974-2123
Reference 974-2288
Serials 974-9080

CREDITS...

CLUE is an occasional publication of the Shimberg Health Sciences Library & Media Center at the University of South Florida.

Comments: lhowlett@health.usf.edu

Editors: Lee Ann Howlett,
Danny O'Neal

A special thanks to our **contributors** to this issue: Rose Bland, Linda Florence, Barbara Greenberg, Duane Reigel, John Scott.

Luis 'toonist - Shirley Outen

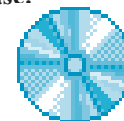


"Passport to Information" Was A Real Trip!

The Shimberg Health Sciences Library & Media Center Technology Fair was a huge success! We would like to thank the approximately 300 students, staff, and faculty who attended and the almost 350 of you who played our online games. With over 900 hits on the "Passport to Information" website, and the many wonderful comments, it really illustrates the drawing power of good food, great people, terrific prizes, good food, new products and information, and good food! Here's a recap of our prize winners:

Congratulations to the winner of our GRAND Prize, the DVD player and case: Deborah Hawkins, College of Nursing.

The winner of the i-Pod was **Rose Baker of USF Health IT.**



Our other prize winners were:

Digital Voice Recorder – **Lavanya Balasubramanian, COM student/staff**

CD Nylon Case - **Ann Hughes, Pre-Nursing student**

Basket of Computer Cleaning Supplies – **Vonetta Williams, CPH student**

Paper Holder, Mouse Pad, and CD Stackable Case – **Marie Vasher, COM student**

Notebook Speakers – **Arika Diane Lee-Goprdan, CON staff**

WiFi Finder – **Summer Decker, COM student**

Notebook Presenter - **Amal Hakki, COM staff**

DVD-RW – **Gail Carter, COM staff**

Digital Web Cam – **Deborah Dorel, Moffitt staff**

Wireless Booster – **Sue Felber, Moffitt staff**

Voice Recorder Message Center – **Tung Hsieh, COM student/staff**

Headphones – **Steven Cole, Resident/ Fellow**

APC Travel Mouse – **Lynn Summers, COM student**

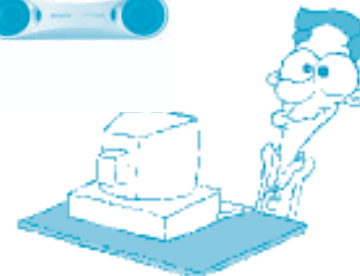
Camera Media Case – **Gay Carter, VA staff**

Notebook Surge Protector – **Lily Lu, COM student/staff**

Kensington Travel Mouse – **David Schrat, COM student**

Wireless Mouse – **Patrick Teefey, COM student**

Switchbox – **Rajendra P. Kadel, CPH student**



Some of your comments!

- * The food was great, and so was the information.
- * Good job on a very worthwhile event.
- * It was a fun fair, the library definitely should repeat it!
- * Very visually appealing set up, good food.
- * A fun, informative event!
- * Cool programs.
- * Good job!!! I look forward to it in future years.

Many thanks from the staff of the Library and Media Center!



New Horses in the Lab!

Whoa! We mean *workhorses*. The lab printers get a lot of use so we decided it was time to upgrade the black/white and color laser printers. Next time you're in the lab, give them a workout! Your PowerPoint slides will print faster and look better than ever. Now *that's* a photo finish you can really use. The systems staff is so happy that they haven't snorted or whinnied since they installed them.

What Patients are Reading

Want to keep up with what patients are reading (and be ready to answer their questions)? Check out **MD Consult's** website, and click the "What Patients are Reading" section.

MD Consult reviews sources like *U.S. News & World Report*, *Newsweek*, *MSNBC*, *USA Today*, *New York Times*, *Prevention*, *Working Mother*, *Self*, *Runner's World*, *Ladies Home Journal*, *Woman's Day*, and many more, to learn what health topics are currently hot.

Are you an 'ER' fan? Lots of your future patients are. Click the link, "*On the last episode of ER*," and be ready to discuss what your patients watched... or catch up on a missed episode. The ER link is in the lower-middle area of the homepage.

Is that a Safe Site? (Things your mother never told you)

Worried about unsafe web sites? Check out *SiteAdvisor*, currently in beta version. In a nutshell, *SiteAdvisor* checks out web sites and offers a detailed analysis, warning you of possibly unsafe sites. It even lets you know how many E-mails you could receive a month if you register with a given site. Firefox and Internet Explorer versions are available.

See <http://www.siteadvisor.com> for more info.

See the software review in *Information Week* 3/20/06 at <http://www.informationweek.com/security/showArticle.jhtml?articleID=183700544>

Take Note: Endnote... Now Available in the Computer Lab.

Tired of wrestling with the proper reference formatting for your papers? Come to the computer lab and use *Endnote* to make your life easier. When using *Endnote* or other lab software please save your files to the "H" Drive or your own personal storage device, such as a flash drive.

Need a class on Endnote?

See the monthly listings for the next training session <http://hsc.usf.edu/library/education/classes04.html>

Want to buy your own copy of Endnote?

Contact the USF Computer Store at 974-1779 to get a great deal through USF pricing!

One more note: When we mention commercial products it is not an endorsement. We're just letting you know what's available. In the end, you have to decide for yourself.

Serials:

Faculty of 1000 Medicine here! Hopefully, you've already heard this great news but, just in case you haven't, the HSC Library now has a subscription to BioMed Central's Faculty of 1000 Medicine. This site is (in their words): "The next-generation literature evaluation and awareness service for medicine. Based on the recommendations of a selected faculty of nearly 2500 leading international researchers and clinicians, it will systematically highlight and review the most pertinent papers in any field of medicine."

Physiology Backfiles!!! The HSC Library has purchased the complete online full-text backfile for the American Journal of Physiology titles. Also known as the APS Legacy Project, this purchase includes the entire collection of *AJP* content from inception through September, 1997. Enjoy!

Used textbooks anyone? We're often asked about the best places to buy used textbooks, so we thought we'd pass along the sources that we use. (Only the best for our people!) We recommend Amazon.com <http://www.amazon.com/gp/homepage.html/002-1735977-9295267> and eBay's Half.com at <http://www.half.ebay.com/> Good luck in finding what you're looking for!

"Thank you, thank you very much." - E.

AvianFlu.gov or PandemicFlu.gov

One-stop access to U.S. Government avian and pandemic flu information. Managed by the Department of Health and Human Services.

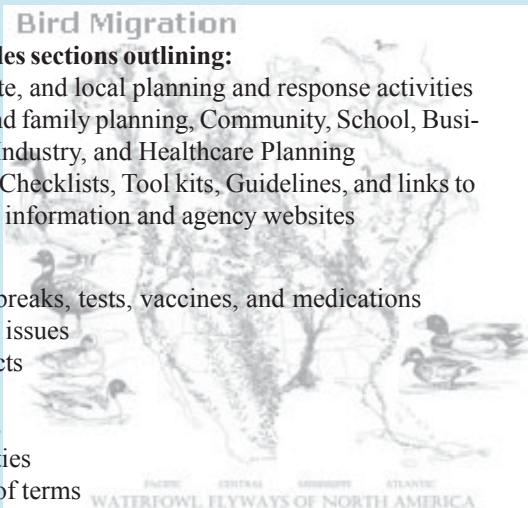
Bird Migration

This site provides sections outlining:

- * Federal, State, and local planning and response activities
- * Individual and family planning, Community, School, Business and Industry, and Healthcare Planning
- * Overviews, Checklists, Tool kits, Guidelines, and links to additional information and agency websites

Links to:

- Monitoring outbreaks, tests, vaccines, and medications
- Bird and animal issues
- Economic impacts
- Travel
- Global activities
- Research activities
- Large glossary of terms
- Maps of North American waterfowl flyways and confirmed human cases by country
- Current news on summits and trials, meetings and conferences, and WHO "Situations and Updates"



The Google Question...

“To Google or Not to Google?”



A lot of Internet discussion, written articles, news broadcasts, and just plain talk have come about in the last year touting the merits of Google, and more specifically, Google Scholar. From a librarian perspective, we try to stay on top of such topics. Our goal is to know how to find the best information. A couple of recent articles look at the merits and shortcomings of using Google for scholarly information. The end result is for you to know that Google is another tool that can *supplement* the vast resources offered from this library, but it should never be considered your only source for research.

Access the Shimberg Health Sciences Library databases from the library homepage. Log in to PubMed, Web of Knowledge, Cochrane, CINAHL, Health and Wellness, PsycInfo, and SportDiscus, and you will gain the advantage of full text availability through those resources. Use the library catalog to identify the library's holdings, online or in print, of specific journals, books, or other media. As for Google Scholar, here are some of the main points:

“Google Scholar indexes more peer reviewed research (than PubMed) and is especially quick in locating highly cited items and the proverbial needle in a haystack. Doctors are encouraged to consult Google Scholar for browsing and serendipitous discovery, not for literature reviews; and they should use the advanced search page to find words and names that occur often in the medical literature.”

“Scholar's mode of presentation hinders its usefulness and may take up valuable time. The quantity of search results is acceptable, but quality is often not. Because current articles are not displayed first, and cannot be sorted, downloaded, or emailed—expect to do a lot of sifting.”

“Google should consider creating a medical portal. Call it Google Medicine; design an interface with medical filters and better algorithms; lead to the best evidence (just don't forget to consult with librarians about where the evidence is located).”



The above excerpted from: *BMJ* 2005;331:1487-1488 (24 December), doi:10.1136/bmj.331.7531.1487

“In searches for clinical trials and systematic reviews, Google Scholar should of course never be used in isolation. However, it is a useful addition to PubMed, Cochrane, and other trusted sources of information, such as the TRIP or UpToDate databases, or a good medical librarian. For hard to find government or conference papers, don't forget to search regular Google in addition to Google Scholar.”

Giustini D. University of British Columbia Library. Searching for grey literature. <http://toby.library.ubc.ca/subjects/subjpage2.cfm?id=877> (accessed 5 Dec 2005).

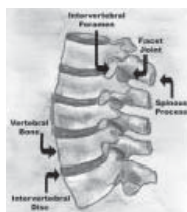
“Some basic questions remain for Google Scholar. What does Google consider ‘scholarly’? Will Google ever tell us exactly what is in the database? Could the Google algorithm present the most current research at the top of the results display? And how often will Google update the database?”

Jacso P. Peter's digital reference shelf: Google Scholar beta. Dec 2004. <http://www.galegroup.com/servlet/HTMLFileServlet?imprint=9999®ion=7&fileName=/reference/archive/200412/googlescholar.html> (accessed 14 Dec 2005).

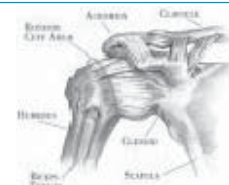
Henderson J. Google Scholar: a source for clinicians. *CMAJ* 2005;172:1549-50. <http://www.cmaj.ca/cgi/content/full/172/12/1549> (accessed 14 Dec 2005).

Looking for Physical Therapy Resources?

Aside from SportDiscus (EBSCO), CINAHL (EBSCO and OVID), and PubMed, there are other sources that provide access to the literature.



The USF libraries website <http://www.lib.usf.edu> has a master list of databases categorized by their subject content. You can search them by subject and then view the type of data they provide. There are currently 37 Physical Therapy ‘key sources.’ Of those, 19 are article databases, 13 are key sources, and 11 are statistics and numerical databases. While you're at it, check other relevant headings, such as medicine, nursing, and physical education.



To get there from the HSC Library homepage, just click the USF Libraries button. **USF Libraries**

Look under the **Electronic Resources** header and click the [Databases/Newspapers](#) link.

Click the ‘by Subject Category’ tab. [by Subject Category](#)

Now, scroll through the headings, find the one you want and click.

(P)URLS... FOR YOUR PERUSING PLEASURE

During those lazy, hazy days of summer...

OR-Live: Live On-Demand Medical Webcasts

<http://www.or-live.com/>

Live webcasts of a variety of surgical procedures from hospitals and institutions in the U.S. and around the world.

Resource Guide for Public Health Preparedness

<http://www.phpreparedness.info/>

The New York Academy of Medicine/National Library of Medicine provides access to more than 1550 electronic publications related to public health preparedness.

Autism Spectrum Disorders

http://www.mchlibrary.info/KnowledgePaths/kp_autism.html

Knowledge Path containing numerous databases and resources related to autism spectrum disorders (ASD).

Clinical Alerts and Advisories

http://www.nlm.nih.gov/databases/alerts/clinical_alerts.html

Go-to-site for the latest clinical alerts and advisories from NIH-funded clinical trials.

See if you can find some of these when you go on vacation...

The Squished Penny Museum

<http://www.squished.com/homenew/index.html>

Some of us here at The CLUE had never heard of 'squished' pennies and didn't know that people collect them. We found this site that features a museum of squished pennies, gives a little history **and** tells you the different places you can get them! Cool! We can't wait to plan our next trip around collecting squished pennies!



Editors, CLUE

University of South Florida
Shimberg Health Sciences Library
12901 Bruce B. Downs Blvd., MDC 31
Tampa, FL 33612

Peer Reviewed Journals (Refereed)



The reference desk is frequently asked how to find peer reviewed journals, or how to determine if the article you have is from a peer reviewed journal. First of all, the peer review process, and the criteria, varies among publishers, but the process applies to all of the original articles published in that journal.



At present, there is no single resource that identifies all peer reviewed journals, but here are some tips on where to find peer reviewed (refereed) articles or to determine if a journal is peer reviewed. The best place to go to determine if an article is from a peer reviewed journal is **Ulrich's International Periodical Directory**. It is online and available from the HSC Library homepage near the bottom of our alphabetic list of databases. Search for the journal title you need and look for the 'refereed' icon, a striped referee shirt (how clever).



If you need to find articles from peer reviewed journals, you can apply a 'peer review' limit to your search in the OVID and EBSCO databases. In OVID (CINAHL, PsycInfo, Medline), use the 'more limits' option and select 'peer reviewed' from the publication types list. With EBSCO (CINAHL and SportDiscus), just check the 'peer reviewed' box when you do your search. In PubMed/Medline, the majority of the journals are peer reviewed, but check Ulrich's to confirm a particular title. Still not sure? Call the reference desk at 974-2288.



Cowabunga! We're off to the dude ranch for the summer!
Comments, questions? Email lhowlett@health.usf.edu