



■ Contact Us

Inquiries and Appointments: **813-974-8900**
 After hours emergencies: **813-974-2201**
 Tampa General Hospital: **813-844-7545**

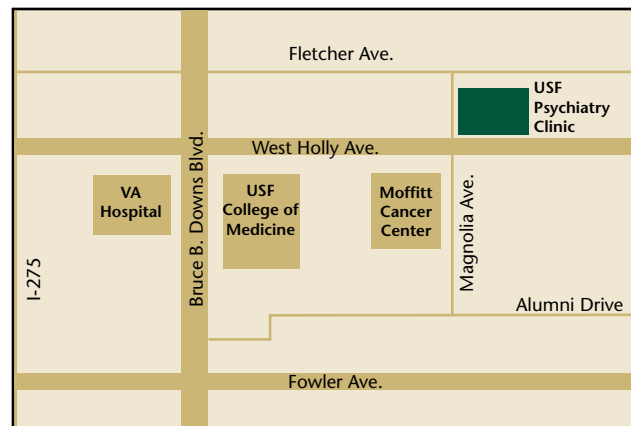
■ What to Expect

Insurance benefits are verified prior to the first appointment; patients are provided an estimate of the cost of services. Payment is expected at the time of service.

Patients should bring all relevant medical records, proof of insurance, and any required managed care authorization to their first appointment.

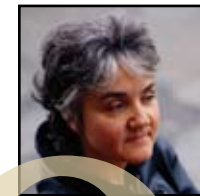
■ Location

3515 E. Fletcher Avenue • Tampa, Florida 33613



Map is not drawn to scale

University of South Florida
Department of Psychiatry & Behavioral Medicine
 3515 E. Fletcher Avenue
 Tampa, FL 33613
 (813) 974-8900 Fax (813) 974-3223



Psychiatry & Behavioral Medicine Services

Evaluation and Treatment for Adults, Adolescents and Children



The USF Department of Psychiatry is comprised of USF Health faculty, residents, and staff. These individuals are part of the USF Physicians Group. The USF Physicians Group (USFPG) is the multi-specialty faculty practice of the USF Health's College of Medicine. The group includes more than 410 physicians, who bring the latest advances in medicine to Tampa Bay. USFPG provides a wide range of medical care services from primary care to specialty care.

The USF Psychiatry Clinic

Located on the USF campus, the USF Psychiatry Clinic offers a bio-psychosocial approach to mental health with a team that provides multidisciplinary evaluation and treatment to people of all ages and needs.

Services include:

- Comprehensive evaluation and consultation
- Individual short-term or long-term therapy
- Group therapy
- Couples therapy
- Family therapy
- Medication and medical management
- Psychological testing
- Cognitive training
- Neurostimulation

Referrals to community support groups or other resources are made when appropriate.

Services

The USF psychiatry clinic offers a full range of consultative, diagnostic, assessment and treatment services for persons with mental health disorders. We offer multi-disciplinary treatment which can include working with psychiatrists, psychologists, licensed therapists, social workers, pharmacists, school psychologists and registered dietitians. General psychiatric evaluations are performed to diagnose and determine the course of treatment that best suits you as an individual. We offer services including but not limited to individual therapy, pharmacologic management, group therapy, family therapy and psychological testing. We provide expert assessment and treatment in:

- Attention Deficit Hyperactivity Disorders
- Depression, Bipolar Disease and Other Mood Disorders
- Family and Social Issues
- Behavioral Problems
- Anxiety Disorders Including Obsessive Compulsive Disorders and Panic Disorders
- Eating Disorders
- Psychosomatic Illnesses

Specialty Services

- Memory Disorders
- Learning Disorders
- Substance and Alcohol Abuse
- Treatment Resistant Depression
- Autism
- Forensic Psychiatry
- Attention Deficit Hyperactivity Disorder
- Neuropsychiatry

Behavioral Medicine and Wellness Services.

To promote improved physical and psychological health for people of all ages who are experiencing or are at-risk of medical problems and/or physical limitations. Services include:

- Primary Prevention
- Rehabilitation
- Counseling for Adaptation to Illness and Loss
- Management of Medical Complications

Consultation Services. We offer inpatient and outpatient consultations and will work with referring physicians to coordinate your care. Independent medical examinations and expert testimony are also available.

Psychological Testing. A full range of services includes:

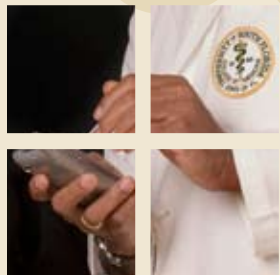
- Personality Evaluation
- Neuropsychological Evaluation
- Psychoeducational Evaluations
- Intellectual and Academic Evaluation
- Cognitive Processing



Our Research

Patients may volunteer for research conducted by USF Psychiatrists. In addition to clinical research, scientists in the department are studying the causes of mental illness in our laboratories. Topics of study vary and may include anxiety, eating disorders, schizophrenia, depression, insomnia, alzheimer's disease and other psychiatric and behavioral disorders. Participation in research protocols often provide access to leading edge treatments at minimal or no cost to the volunteer. If interested, call (813) 974-8900 for information on current clinical trials.

Physicians & Staff



Yvonne Bannon, RN
Clinical Research, Schizophrenia and Bipolar Disorder

Martha Brown, MD
Addiction Medicine

Jessica Elias, LMHC
Mood/Anxiety Disorders, Adjustment to Chronic Illness

Francisco Fernandez, MD
Mood Disorders, AIDS, Pain Management

Lois Gonzales, ARNP
Mood Disorders, Anxiety and Women's Issues

Brian Keefe, MD
General Psychiatry, Emergency and Psychosomatic Medicine

Susan Leibmann, MD
Adult, Adolescent and Child Psychiatry

Elizabeth Marsh, LMHC
Anxiety, Family and Marital Counseling, Adolescents

Richard Marshall, PhD
School Psychologist, Developmental and Behavioral Issues

Robert Moering, PsyD
Cognitive Therapy, Personality Assessments, Addictions

Wade Myers, MD
Child Psychiatry, Forensic Psychiatry

Humberto Nagera, MD
Attention Deficit Hyperactivity Disorder

Pauline S. Powers, MD
Psychosomatic Medicine, Eating Disorders, Schizophrenia

Marguerite Poreda, MD
Geriatric and Forensic Psychiatry

Arthur Rosenblatt, PhD
Cognitive and Behavioral Therapy, PTSD, Anxiety and Phobias, Neuropsychological Evaluations

Deborah Roth, DO
General Psychiatry, Mood Disorders

Orlando Ruano, DO
General Psychiatry, Emergency and Psychosomatic Medicine

Carlos Santana, MD
Adult Psychiatry, Schizophrenia and Mood Disorder

Kaillie Shaw, MD
Adult, Adolescent and Child Psychiatry

David V. Sheehan, MD, MBA
Anxiety Disorders, Depression and Bipolar Disorder, Psychiatric Research

Sandra Stock, MD
Child and Adolescent Psychiatry, Anxiety Disorders

Danielle Sutton, PhD
Autism Assessment and Intervention

Berney Wilkinson, PhD
Behavioral Disorders, Developmental and Learning Disabilities, Parent Training

John P. Zak, MD
Anxiety and Depression